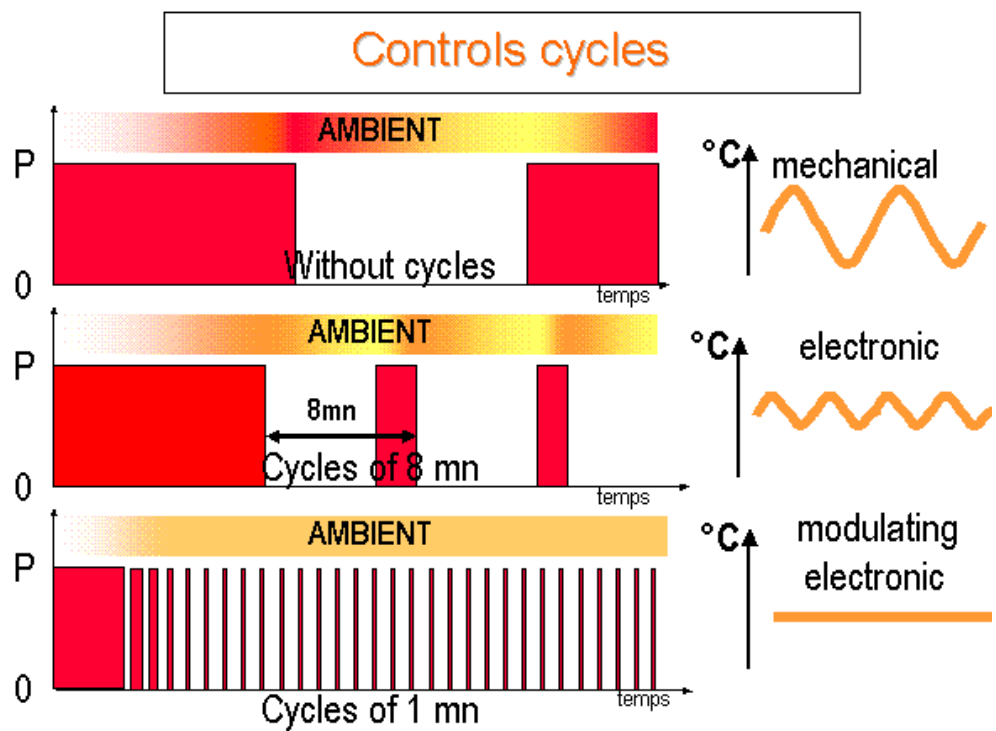
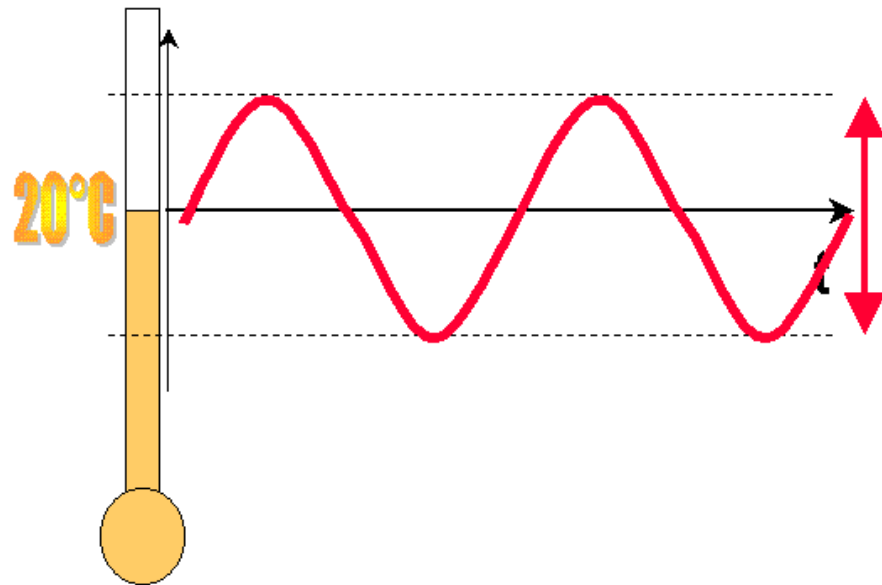


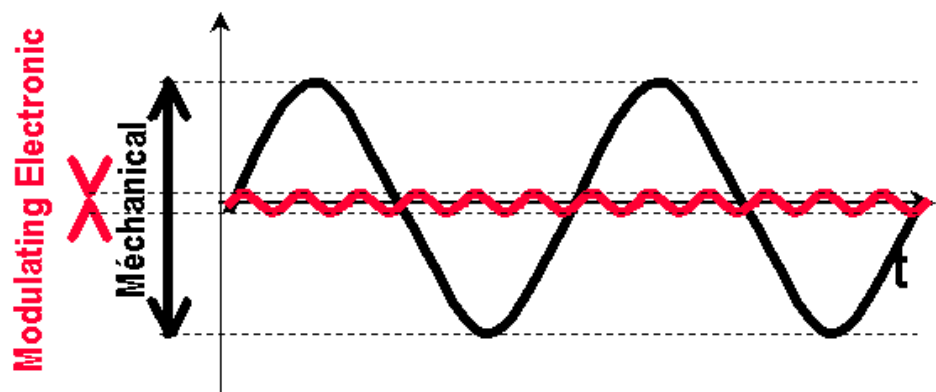
CONTROLS



Differential



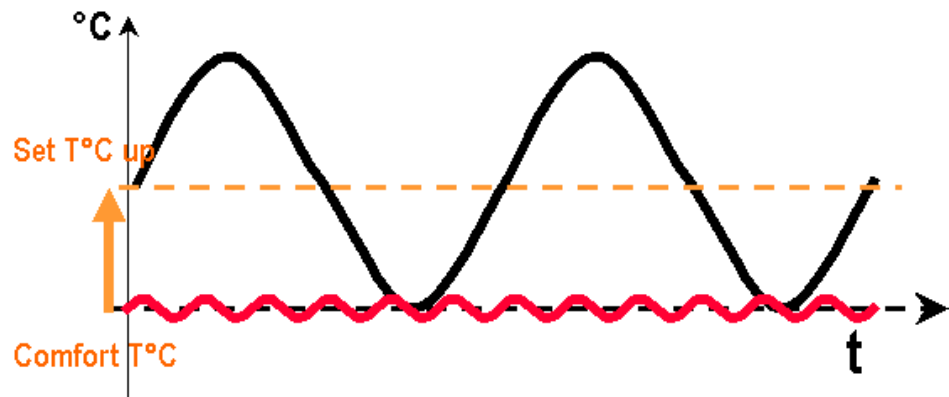
Differential value



Mechanical thermostat control ~ from 1 to 2°C

Modulating electronic control < 0,1°C

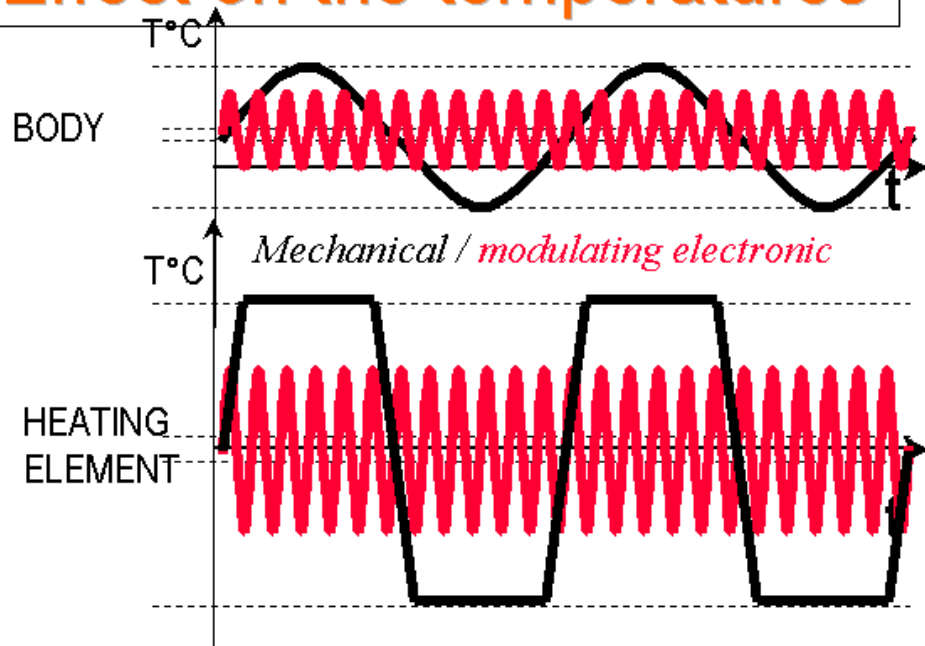
Effect on set temperature



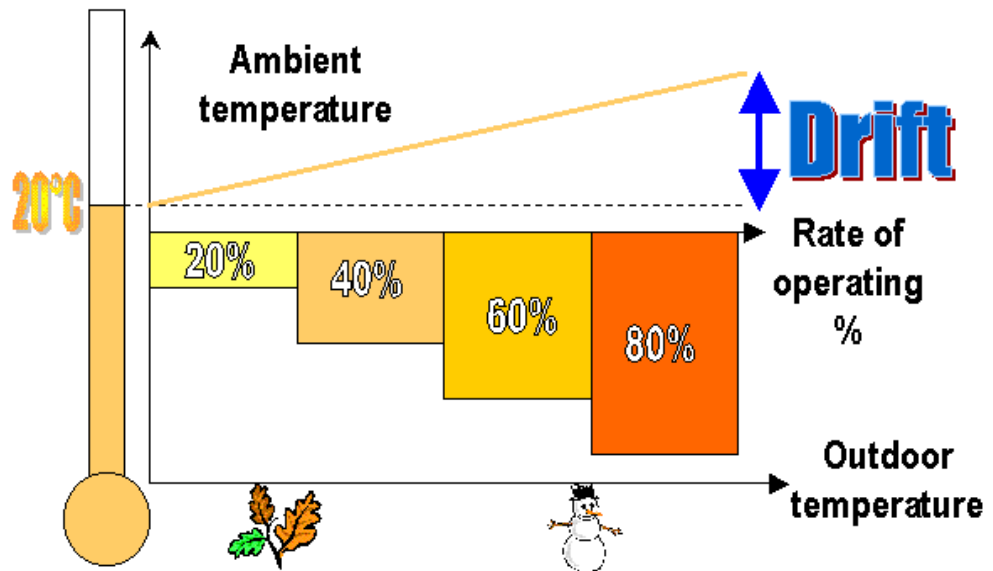
Mechanical thermostat -the set temperature is risen to make good the discomfort which is caused by the temperature variations

Electronic thermostat -1°C less = economy 7 %

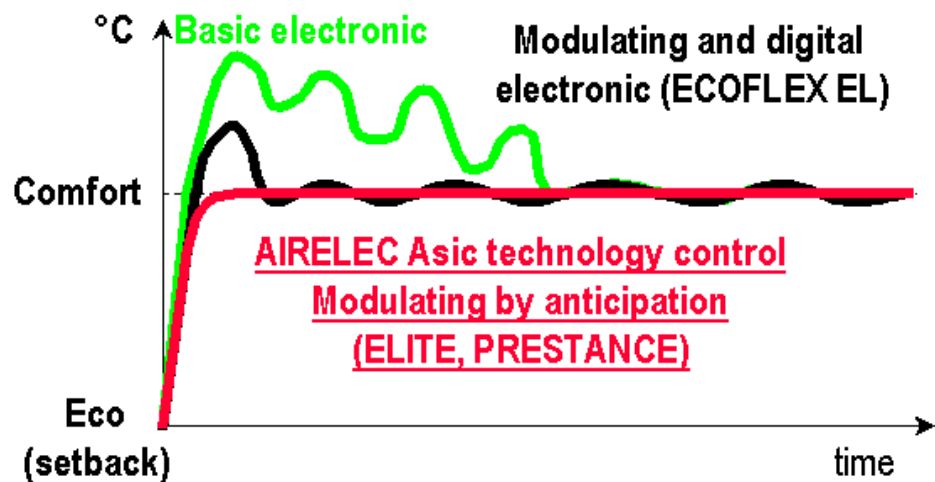
Effect on the temperatures



Drift of set temperature

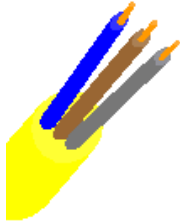


Operating compare



Category of performance

- Cat B
 - Drift < 2,5 °K
 - Differential < 1 °K
- Cat C
 - Drift < 1,5 °K
 - Differential < 0,5 °K
 - Pilot wire functions (at least) : Comfort, Eco (setback), Frost protection, off
 - (ELITE, PRESTANCE, ECOFLEX EL)

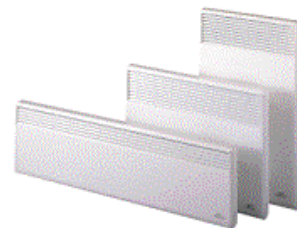


Type of convectors with electronic thermostat A.S.I.C.

ECOFLEX EL



ELITE 3D



PRESTANCE 2

